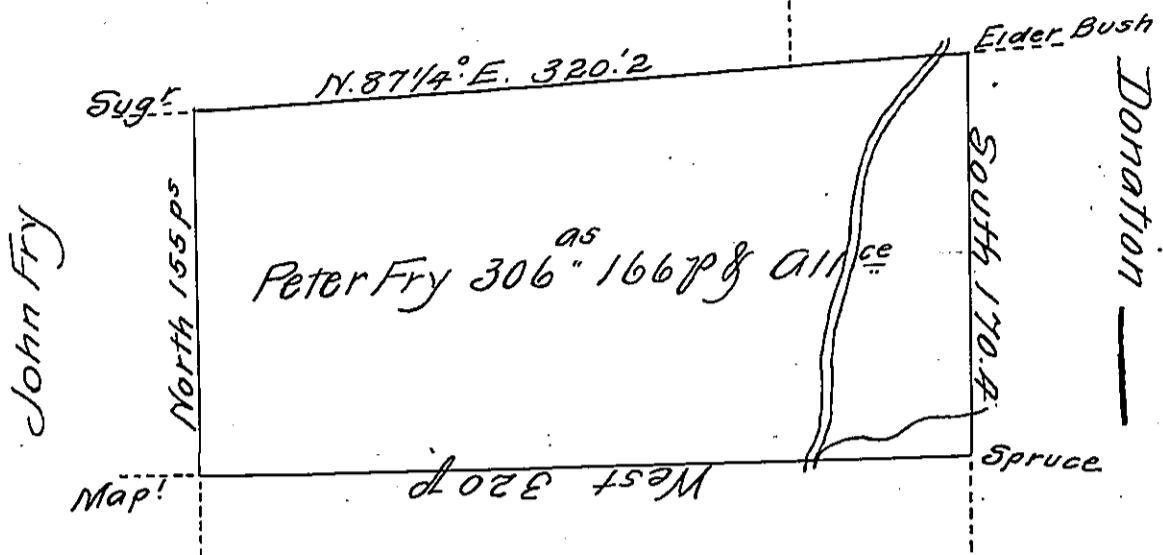


Donation Lands



MEMO

Situate on the East Side of French Creek in Allegheny County
 Containing 306^{as} 166 perches and allowance of six p Cent for
 Roads &c. Surveyed the 18th day of ~~May~~^{June} 1794 -
 In pursuance of a Warrant dated the 10th day of April 1793

W^m Power D. J. Sr.

To Daniel Brodhead Esq^r }
 Surveyor General }

IN TESTIMONY that the above is a copy of the original remaining on file in
 the Department of Internal Affairs of Pennsylvania, made
 conformably to an Act of Assembly approved the 16th day of
 February, 1833, I have hereunto set my Hand and caused
 the Seal of said Department to be affixed at Harrisburg,
 this Second day of August 19th

Henry Howell,

Secretary of Internal Affairs.